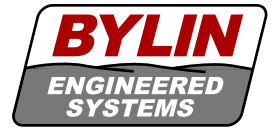


Bylin Engineered Systems

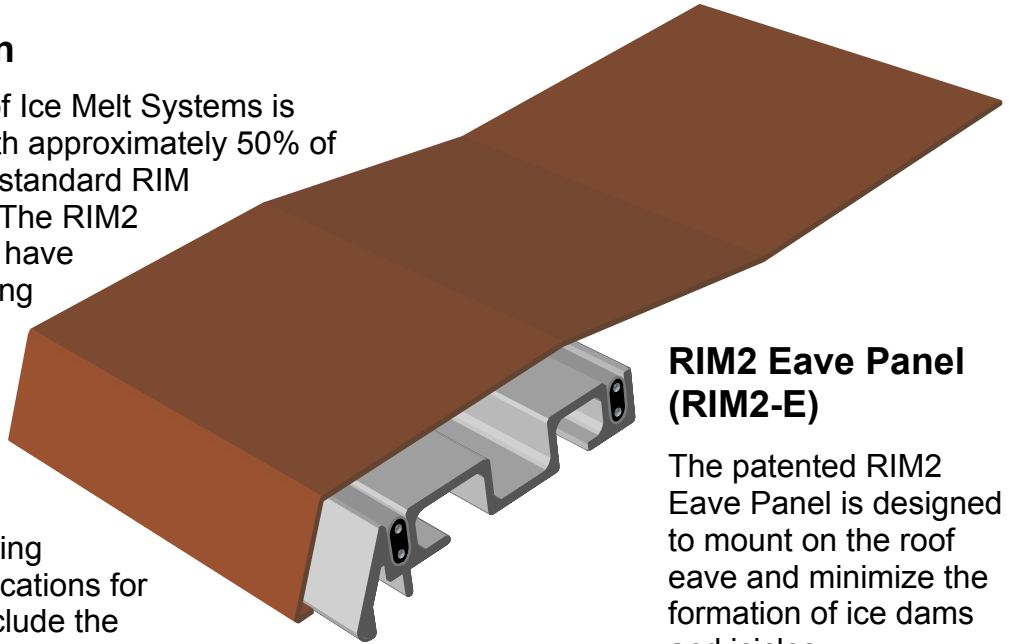
4800 Golden Foothill Parkway, El Dorado Hills, CA 95762
Phone: 916-933-5666 / Fax: 916-933-5959



RIM2 Roof Ice Melt Systems

General Information

The patented RIM2 Roof Ice Melt Systems is specifically designed with approximately 50% of the power output of our standard RIM Roof Ice Melt Systems. The RIM2 Eave and Valley Panels have two self-regulating heating cables designed to minimize the formation of ice dams and icicles for locations with low snow load accumulations (usually less than 15 inches) during the winter season. Applications for RIM2 Systems might include the following:



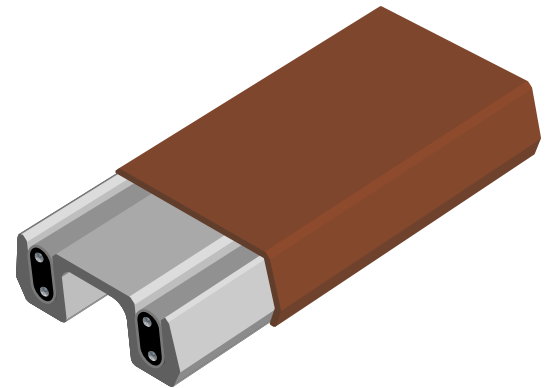
RIM2 Eave Panel (RIM2-E)

The patented RIM2 Eave Panel is designed to mount on the roof eave and minimize the formation of ice dams and icicles.

- * The midwest and east coast with annual snowfall less than 120 inches.
- * Western mountain areas below 6500 ft; less than 120 inches annual snowfall.
- * South facing roofs where the solar energy from the winter sun keeps roof snow accumulation to 15 inches or less.

RIM2 Valley Panel (RIM2-V)

The patented RIM2 Valley panel is designed to mount in the roof valleys and minimize the formation of ice dams that would create water ponding behind the ice dams.



Panel Specifications

Material Selection:	Copper or Kynar painted aluminum
Color Selection (Alum.):	Over 30 colors
Heating Cable Supplied:	2 runs per foot of panel Model WFP-612 for 120V operation Model WFP-622 for 208 to 277V operation
Panel Lengths:	Up to 10 feet per panel
Components Supplied:	Power connection kit(s), panel splice covers, panel end caps.
Note:	Gutters and downspouts with WFP heating cable should be specified for eaves above walkways, driveways, decks and lower roofs.

CAUTION: The lower power output of the RIM2 System limits its performance under certain extreme winter conditions, and some icing may occur. Bylin's standard RIM System should be selected for applications requiring the higher power output.